

INSTALLATION MANUAL

TRANSDUCER MOUNTED

This installation guide is for the Transducer-Mounted motor models, for Gen 2 or Gen 3 XL systems. The motor plate fits onto the same cavity as the existing Gaurdian or Lowrance plates.

For Hobie PA 12/14 and Outback, start here.
For Hobie Lynx & Passport 12, start on page 3.

1. Gather supplies.

You will need a Phillips screwdriver and the included allen key.

2. Remove existing plate:

Locate the three Phillips screws on the outer portion of the Gaurdian plate and unscrew.

Remove the retraction cord from the plate by untying the knot on the cord attached to the plate's cord loop.

Secure the loose end of the retraction cord to the pulley. Be careful to not let the cord slip into cavity. Knot cord around pulley. This cord is not used for assembly.



3. Insert motor cable.

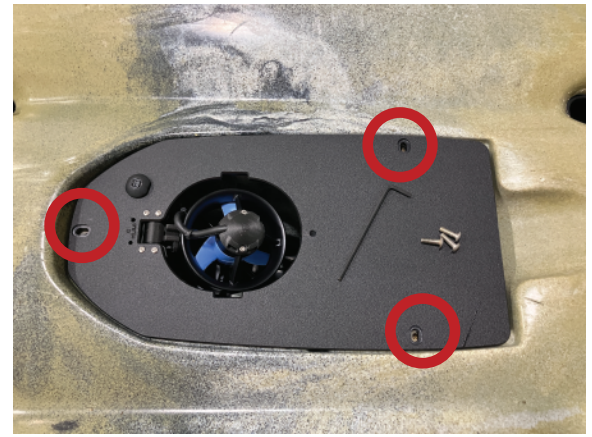
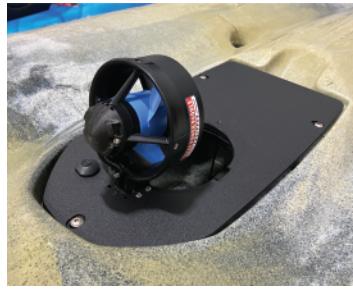
Insert the red and black motor cable connector into the pass-through hole at the bottom of the cavity in the kayak hull until no slack remains.



4. Install motor plate.

Install the plate on top of the cavity and insert and fasten the three screws using allen key.

The motor deploys automatically only when the unit is in the water and the throttle is turned to the run position. The thrust from the propeller causes the motor to swing down and forward into position.



5. Connect throttle & motor.

The motor & throttle cables need to be connected to the main control case. The throttle connector (three pin) attaches to the top receptacle and the motor connector (four pin) attaches to the bottom receptacle. These receptacles are keyed and will only connect when oriented properly, white dot up.

Insert pins fully and twist black collar clockwise until securely fastened. The first several times twisting and untwisting this black collar may be difficult but will become easier with use.



6. Control case.

The waterproof control case should be placed behind the seat in the cargo section of the kayak. The motor cable should be routed under the seat along with the throttle cable. You can use cable clips to secure both cables.



4. Attach throttle + steering control.

Attach the black plastic throttle control base to the rudder control knob and slide throttle onto base as shown. (For Pro Angler Kayaks use the included screw to attach to rudder handle)



INSTALLATION MANUAL - TRANSDUCER MOUNTED MODELS

For Hobie Lynx & Passport 12:

1. Gather supplies.

You will need a Phillips screwdriver. If you have skid plates or damage guards, you can install them now as well.

2. Remove existing plate:

Locate the two Phillips screws on the existing Low-rance Ready plate and unscrew.

3. Install motor plate.

Feed the red and black motor cable connector into the pass-through hole at the bottom of the cavity in the kayak hull until no slack remains



Hinge
faces
into
kayak

Install the plate on top of the cavity and insert and fasten the two screws. *Before adding the screws put on skid guards if purchased.

Make sure the motor hinge goes into the kayak and the 4 screws are facing outwards. When installed the motor should be able to swing out and deploy unobstructed



4. Connect throttle & motor.

The motor & throttle cables need to be connected to the main control case. The throttle connector (three pin) attaches to the top receptacle and the motor connector (four pin) attaches to the bottom receptacle. These receptacles are keyed and will only connect when oriented properly, white dot up.

Insert pins fully and twist black collar clockwise until securely fastened. The first several times twisting and untwisting this black collar may be difficult but will become easier with use.



5. Control case.

The waterproof control case should be placed under or behind the seat in the cargo section of the kayak. Additional risers to lift the seat can be purchased through third parties. The motor cable should be routed under the seat along with the throttle cable. You can use cable clips to secure either cable.

6. Attach throttle + steering control.

Attach the black plastic throttle control base to the rudder control knob and slide throttle onto base as shown.



The motor deploys automatically only when the unit is in the water and the throttle is turned to the run position. The thrust from the propeller causes the motor to swing down and forward into position.

For transport secure the motor in the retracted position using the motor clip that snaps onto the plate to keep the motor from deploying.