



## Quick Installation Guide

Thank you for purchasing the Texas Power Paddle Kayak Propulsion System. Installation of the motor plate onto your Hobie Kayak should take less than five minutes. The motor plate fits into the same cavity as the existing Hobie Lowrance Ready Plate. The only tool you will need is a Philips screwdriver.



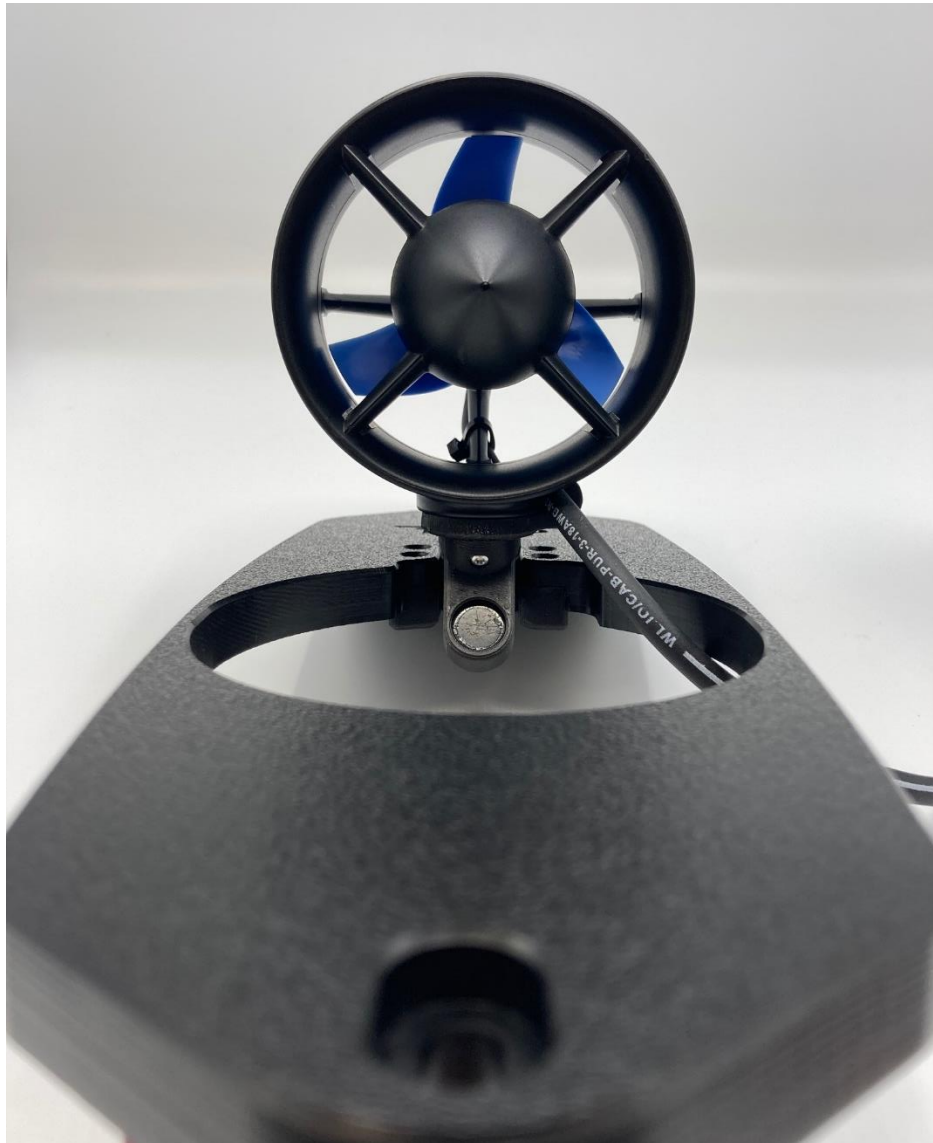
### Removal of the Existing Plate:

- Locate the two Philips screws on the outer portion of the LOWRANCE READY plate and unscrew. Remove the plate and store for future use.



### **Installation of the Texas Power Paddle motor plate**

- Insert the red and black motor cable connector into the pass-through hole at the bottom of the cavity in the kayak hull until no slack remains.



- Install the plate on top of the cavity and insert and fasten the two screws. When installed the motor should be able to swing out and deploy unobstructed

### **Connecting Throttle and Motor to Waterproof Control Case:**

The motor and the throttle cables need to be connected to the main control case. The throttle connector (three pin) attaches to the top receptacle and the motor connector (four pin) attaches to the bottom receptacle. These receptacles are keyed and will only connect when oriented properly. Rotate the red portion of the connector to find the correct orientation.



-Insert fully and twist black collar closest to the case clockwise until securely fastened. The first several times twisting and untwisting this black collar may be difficult but will become easier with use. An optional connector removal tool shown below can be used to assist with twisting and untwisting the black collar.



**Location of Waterproof Control Case and Throttle Control on Kayak:**

The waterproof control case should be placed just behind the seat in the cargo section of the kayak. The motor cable should be routed under the seat along with the throttle cable.



-Attach the black plastic throttle control base to the kayak rudder control knob by removing the adhesive and attaching to the top of the rudder handle.



-Slide the throttle onto the base by aligning the grooves in the base and handle.



## Operating Instructions

-Connect the motor and throttle cables to the waterproof case and turn system on using the power button. Once the unit is on the case should be closed and latched during use to keep waterproof.

**\*Operating the motor out of the water can cause damage\***

**Do so only to briefly test functionality before launching into water**

-Rotate throttle control knob fully counterclockwise to arm system (this prevents the motor from starting unexpectedly when the unit is first turned on)

- When the kayak is in the water turn the throttle knob clockwise to activate the motor. **At least a quarter turn of the knob will be required before activation.** The motor will then start and deploy from the cavity.

-When the throttle knob is turned fully counterclockwise (off) the unit will briefly initiate reverse to automatically retract the motor into the cavity. To manually retract the unit pull the motor cable upward and the motor will rotate on hinge into the hull cavity. **For transport secure the motor in the retracted position using the motor clip that snaps onto the plate to keep the motor from deploying**









-Attach red safety cut-off switch tether to life jacket to ensure unit automatically shuts down if separated from vessel

### Expected Run Time

Low Power ~6-8 hours    Medium Power ~4-6 hours    High Power ~2 hours

## Instructions for Use

 Insert motor and throttle cable connectors fully and twist black collar clockwise to lock	 Attach red emergency cut-off switch tether to unit and to life vest
 Turn power button on- LCD will illuminate and unit will emit startup tone	 Turn throttle knob counterclockwise fully to arm system- unit will tone for three seconds and is ready for use
 To charge unit turn off power and insert charging cable into charging jack- a full charge will take ~8 hours	 Charge status led Blue- Charger connected Red-Actively charging Green- Charge complete

Close and latch case to avoid water damage – unit is only waterproof when properly closed

### Troubleshooting & Care Tips

- The motor will shut down automatically if it gets clogged during use. This is a safety feature to prevent damage. When this occurs, the user should remove the safety tether clip from the control case and manually remove the debris from the motor. **Remember to replace the safety clip or the unit will not operate.**
- A thorough rinse with fresh water after each use will keep the motor and the motor plate from accumulating excess dirt and debris that can inhibit performance. **Always rinse after each use in saltwater environments**
- The throttle cable and waterproof case should be stored indoors when not in use.
- In coastal environments use of a small amount of dielectric grease for the throttle and motor connectors will reduce any potential corrosion buildup.
- After the first use of the system check the three fasteners holding the motor plate to the kayak to ensure they remain properly tightened
- When transporting or launching the kayak take care to not rest or drag the kayak directly on the motor plate region.
- If you need assistance view the install videos by scanning the QR code below or email us at [info@texaspowerpaddle.com](mailto:info@texaspowerpaddle.com). If you enjoyed the product, we would appreciate a review.



INSTAGRAM



REVIEWS



INSTALL VIDEOS